

# TOWN OF TABOR CITY

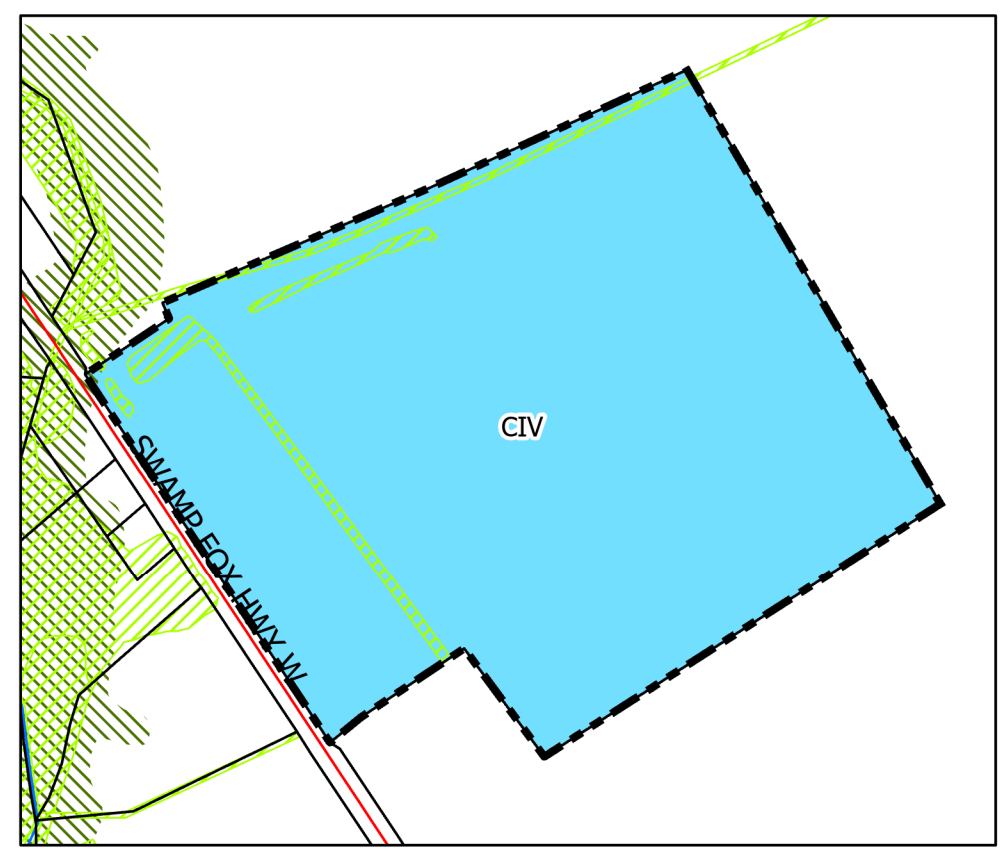


## OFFICIAL ZONING MAP Enlarged to Town Limits

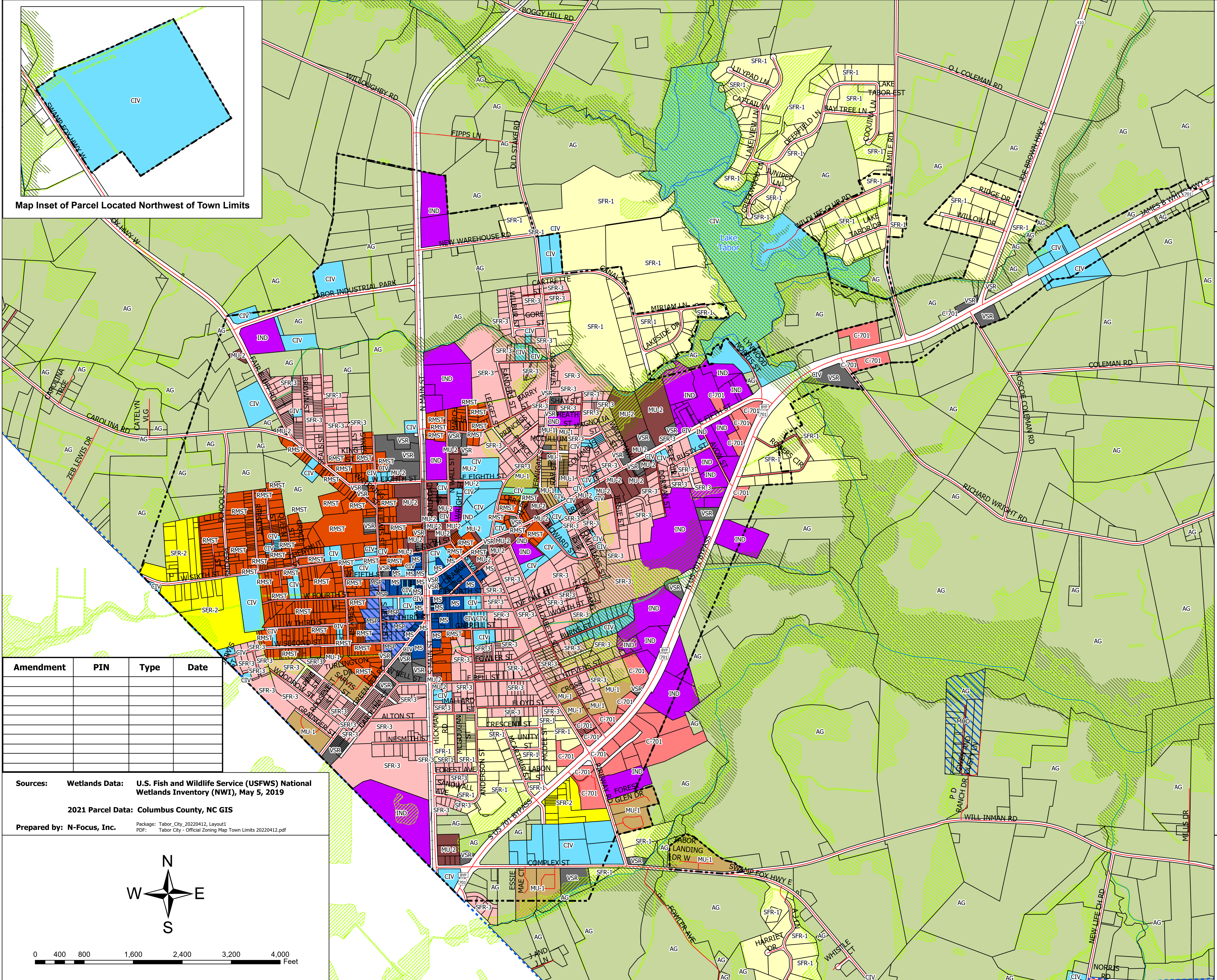
April 12, 2022 DRAFT

### LEGEND

- Roads
  - Railroad
  - Stream Centerline
  - Outline of Water Bodies
  - Flood Zone (FRIS Effect, 2019)
  - Wetlands Identified by USFWS
- Jurisdictions**
- Town Limit
  - Extraterritorial Jurisdiction (ETJ) Boundary
  - 2021 County Tax Parcels
- Primary Zoning Districts**
- Agriculture (AG)
  - Single-Family Residential (SFR-1)
  - Single-Family Residential (SFR-2)
  - Single-Family Residential (SFR-3)
  - Residential Main Street Transition (RMST)
  - Main Street (MS)
  - Main Street Periphery (MSP)
  - Civic (CIV)
  - Mixed Use (MU-1)
  - Mixed Use (MU-2)
  - US Highway 701 Commercial District (C-701)
  - NC Highway 410 Commercial District (C-410)
  - Vehicle Service and Repair (VSR)
  - Industrial (IND)
- Overlay Zoning Districts**
- Traditional Neighborhood Development Overlay (TNDO)
  - Scenic Corridor Overlay (SCO)
  - Heavy Industry Overlay (HIO)
  - Mini Farm Overlay (MFO)
  - Manufactured Home Overlay (MHO)
- Prior Approval**
- Conditional / PUD Approvals on File (Ref. #)

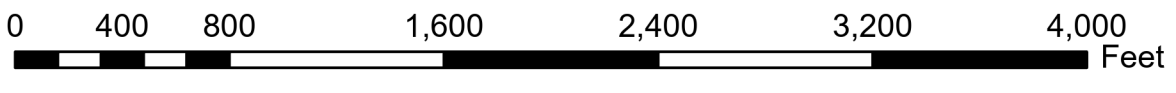
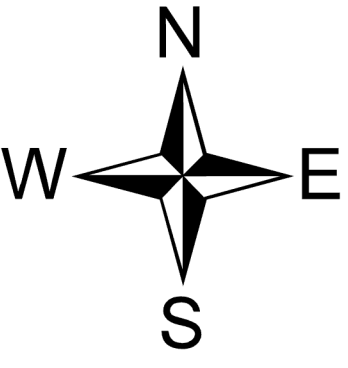


Map Inset of Parcel Located Northwest of Town Limits



Amendment	PIN	Type	Date

Sources: Wetlands Data: U.S. Fish and Wildlife Service (USFWS) National Wetlands Inventory (NWI), May 5, 2019  
 2021 Parcel Data: Columbus County, NC GIS  
 Prepared by: N-Focus, Inc. Package: Tabor\_City\_20220412\_Layout1 PDF: Tabor\_City - Official Zoning Map Town Limits 20220412.pdf



Disclaimer: This map was compiled from existing Columbus County property parcel maps as of October 8, 2021 for the sole purpose of presenting information on Zoning District boundaries. This map is not to be used for the transfer of property, easements, or conveyances.

Adopted This The \_\_\_\_\_ Day of \_\_\_\_\_,

Mayor \_\_\_\_\_

Town Clerk \_\_\_\_\_

Planning, Zoning, and Subdivision Administrator \_\_\_\_\_